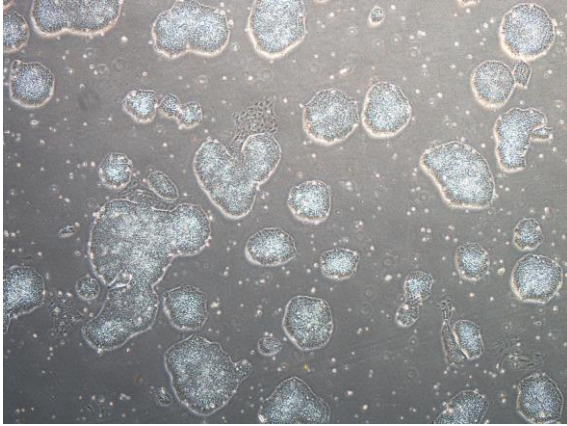
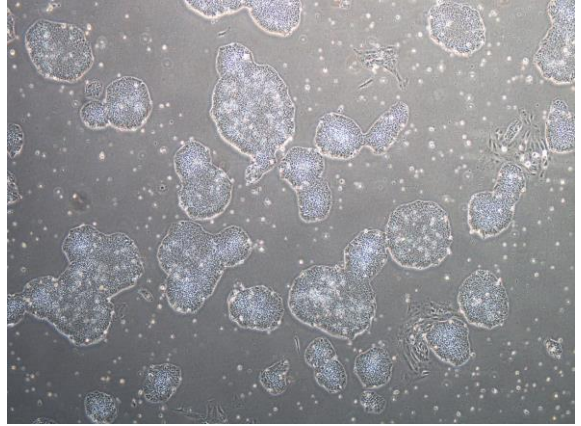


【 CiRA-j-1214 】 Morphology of iPSC colonies

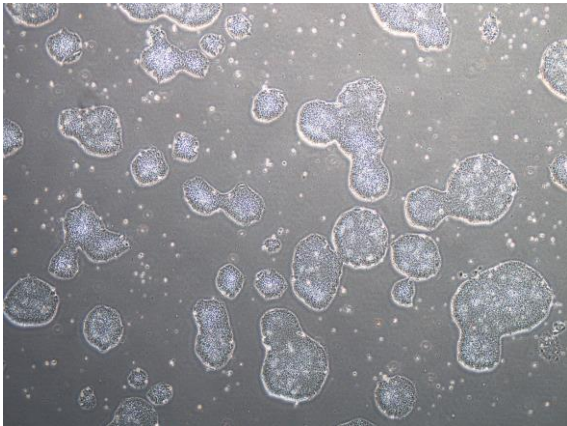
CiRA-j-1214-A: passage-2



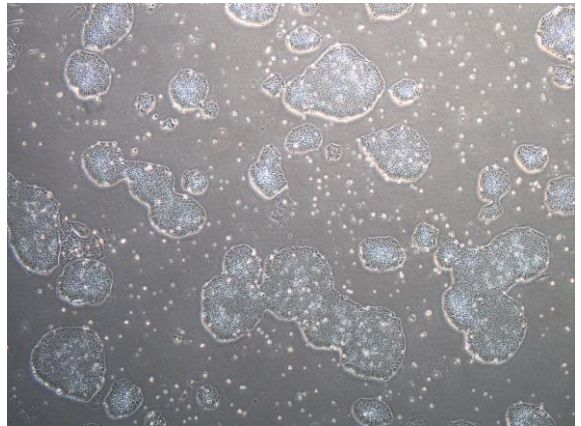
CiRA-j-1214-B: passage-2



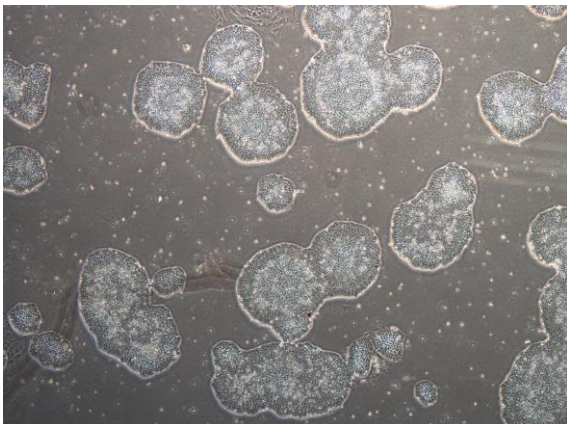
CiRA-j-1214-C: passage-2



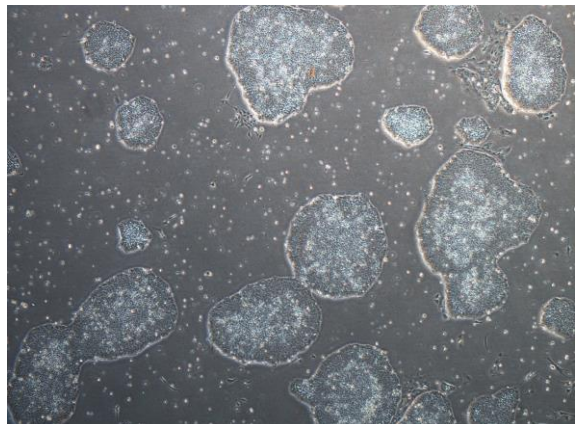
CiRA-j-1214-D: passage-2



CiRA-j-1214-E: passage-2



CiRA-j-1214-F: passage-2



(All images were captured at 4x magnification)